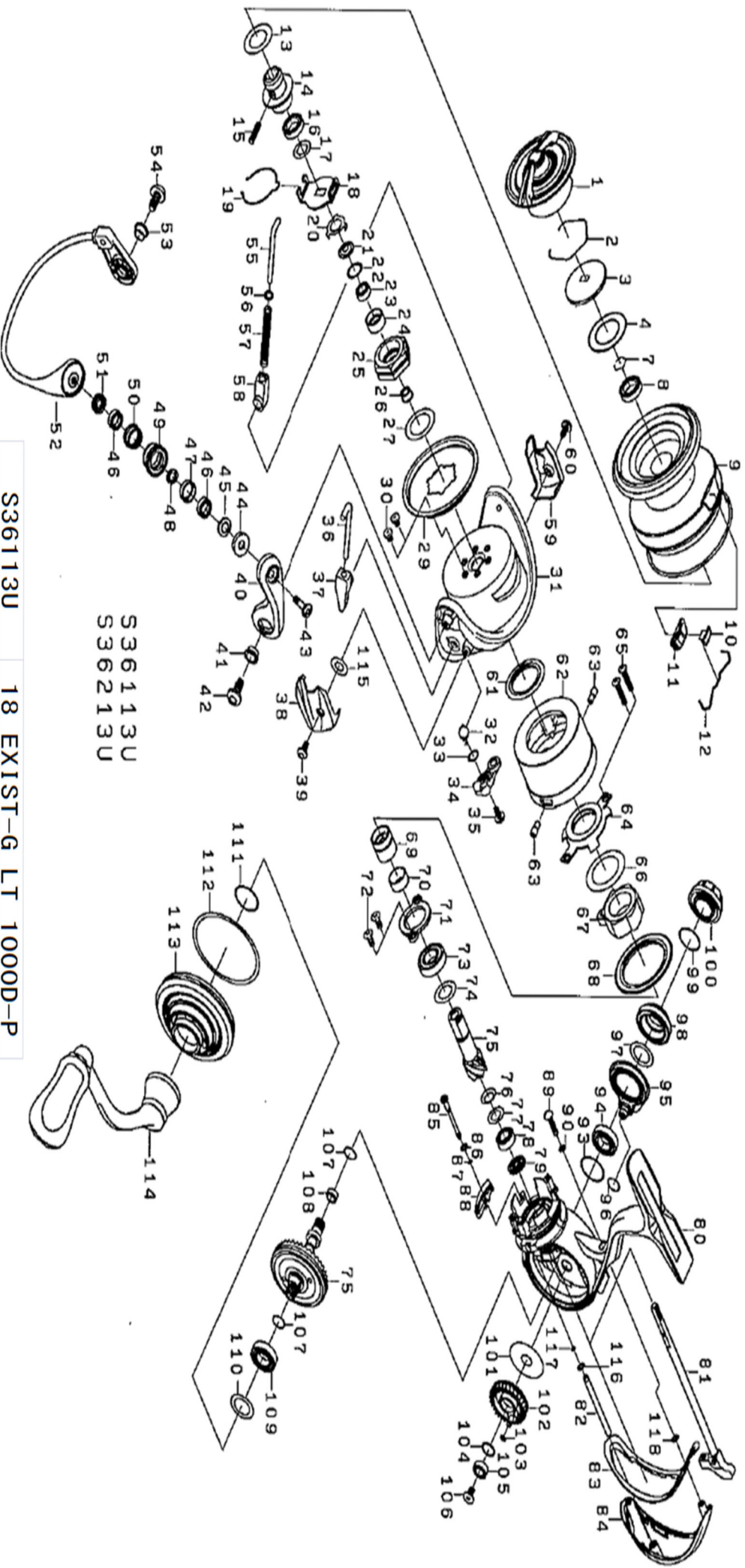




# 2018 EXIST LT 2000D-P

Please quote by part number, not key number when ordering  
 spares@daiwaaustralia.com.au PH: 02 8644 8644



S36113U  
 S36213U

S36113U	18 EXIST-G LT 1000D-P
S36213U	18 EXIST-G LT 2000D-P



Please quote by part number, not key number when ordering  
 spares@daiwaaustralia.com.au PH: 02 8644 8644  
**2018 EXIST LT 2000D-P**

Key No.	Part Number	Description	Key No.	Part Number	Description	Key No.	Part Number	Description
1	61615301	DRAG KNOB	41	61254901	ARM LEVER SCREW COLLAR	79	61588201	PINION BEARING COLLAR
2	61556701	DRAG RING	42	61255001	ARM LEVER SCREW	80	61733701	BODY ASSY
3	61757501	DRAG DISC WASHER	43	61257001	ROLLER SCREW	81	61614001	MAIN SHAFT
4	61678901	ATD DRAG WASHER( 1pac-1pcs )	44	61538001	ROLLER MAG COLLAR	82	61608901	OSCILLATING POST
7	6B358702	BEARING RETAINER	45	61538401	ROLLER MAGNET ASSY( A )	83	61589001	REAR CAP PACKING
8	6G212503	SPOOL BALL BEARING	46	61256702	ROLLER BALL BEARING	84	61589101	REAR CAP
9	61734201	SPOOL ASSY ( 2-12)	47	61256601	ROLLER COLLAR ( A )	85	61609104	BALL KICK COLLAR SCREW
10	61558001	LINE STOPPER	48	61256301	ROLLER COLLAR ( B )	86	61718501	BALL KICK COLLAR WASHER
11	61563601	LINE STOPPER PLATE	49	61256502	LINE ROLLER	87	61718601	BALL KICK COLLAR O-RING
12	61314801	LINE STOPPER SPRING	50	61256401	ROLLER COLLAR ( C )	88	61553501	BALL KICK COLLAR
13	61546300	SPOOL WASHER ( A )	51	61537801	ROLLER MAGNET ASSY( B )	89	61553601	REAR CAP SCREW
14	61549501	SPOOL METAL	52	61614601	BAIL ASSY	90	6G315301	REAR CAP SCREW WASHER(A)
15	61558201	SPOOL METAL SCREW	53	61254901	BAIL HOLDER SCREW COLLAR	93	61554101	DRIVE BEARING ( B ) WASHER
16	6G522705	SPOOL METAL BALL BEARING	54	61255001	BAIL HOLDER SCREW	94	61046802	DRIVE BALL BEARING ( B )
17	61602201	SPOOL WASHER ( B )	55	6G471803	BAIL SPRING SHAFT	95	61587901	SET PLATE
18	61546201	CLICK HOLDER	56	6G685401	BAIL SPRING SHAFT WASHER	96	61551301	SET PLATE O-RING
19	61525101	CLICK LEAF SPRING	57	61304801	BAIL SPRING	97	61555501	COVER WASHER
20	6G471501	ROTOR NUT PLATE	58	6G471601	BAIL SPRING SHAFT HOLDER	98	61552802	SIDE COVER ( R )
21	61729101	ROTOR NUT PACKING	59	61287303	BAIL HOLDER COVER	99	6G399702	HANDLE CAP O-RING
22	63755202	ROTOR NUT BEARING WASHER	60	61255201	COVER SCREW	100	61555901	HANDLE CAP
23	6H959602	ROTOR NUT BALL BEARING	61	61554901	ROTOR PACKING	101	61551401	OSCILLATING GEAR WASHER
24	61690101	ROTOR NUT COLLAR	62	61554501	STOPPER CAP ASSY	102	61551501	OSCILLATING GEAR
25	61305201	ROTOR NUT	63	61554701	STOPPER CAP SCREW	103	6G683301	OSCILLATING GEAR O-RING
26	61555001	ROTOR NUT BEARING COLLAR	64	61553801	MAGSEALED PLATE	104	6H129200	OSCILLATING GEAR WASHER
27	63727601	ROTOR NUT WASHER	65	6H842805	MAGSEALED PLATE SCREW	105	6G686904	OSCILLATING GEAR BALL BEARING
29	61287401	ROTOR COVER	66	6H502200	MAGSEALED PLATE WASHER	106	6G940401	OSCILLATING GEAR SCREW
30	6H022701	ROTOR COVER SCREW	67	6H412602	ONEWAY CLUCH	107	61731701	DRIVE GEAR O-RING
31	61286701	ROTOR	68	61553701	STOPPER CAP PACKING	108	61552701	DRIVE GEAR RING
32	61435101	KICK LEVER SPRING	69	61554801	CLUCH RING	109	61046802	DRIVE BALL BEARING ( A )
33	61339500	KICK LEVER WASHER	70	61536202	CLUCH RING COLLAR	110	6G317500	DRIVE BEARING WASHER
34	61304701	KICK LEVER ASSY	71	61552101	PINION BEARING PLATE	111	61588901	BODY COVER O-RING (A)
35	6H417701	KICK LEVER SCREW	72	61552201	PLATE SCREW	112	61588801	BODY COVER O-RING (B)
36	61254601	ARM LEVER SHAFT	73	6G279602	PINION BALL BEARING (A)	113	61733801	BODY COVER ( L )
37	61254701	ARM LEVER SHAFT HOLDER	74	63758500	PINION BEARING WASHER (A)	114	61629201	HANDLE ASSY
38	61287003	ARM LEVER SPRING COVER	75	6Z023806	PINION + DRIVE GEAR SET	115	6F306402	COVER SCREW WASHER
39	61255201	COVER SCREW	76	6H814900	PINION SPRING WASHER	116	6G712401	OSCILLATING POST WASHER
40	61519701	ARM LEVER	77	6E096500	PINION BEARING WASHER (B)	117	6G683301	OSCILLATING POST O-RING
			78	6G466205	PINION BALL BEARING (B)	118	6G315301	REAR CAP SCREW WASHER (B)